

Magic for your skin!

5 years in 2 minutes

and 10 years in 1 month

Rewind your skin time



Improve moisture

Improve tension

Improve elasticity

Improve lift

Start immediately to change the future of your skin

New Item

NC Pre-care Essence
Moisturizing Cream



Ginseng Extract Formula

This cream gives your skin moisture with an ingredient that is the treasure of Korea.

Premium Collagen

Panax Ginseng Precare Essence

Peace of Mind Formula

We don't use any parabens, phenoxyethanol, fragrances, colorings, mineral oils, synthetic surfactants or alcohols

Increase the moisture in your skin six-fold with raw collagen and lamellar care. There are three surprises with one drop of this cream – improved tension, improved elasticity and improved lift. This is a bottle of a new beauty theory that directly delivers the desired ingredients to the desire places. We have formulated a ginseng extract with raw collagen that can be preserved at room temperature. This delivers surprisingly gentle moisturizing power directly to your skin. Give yourself softness, shininess, tension and moisture with an express delivery of beautiful skin.

Magic for your skin!

Rewind your skin time

5 years in 2 minutes

and 10 years in 1 month



Rebirth of your skin after 1 month!

Continued action after 6 hours!

Immediate effect after 2 minutes!

Re-check the tension of your cheeks after two minutes and experience the feeling.

You will be able to feel the difference before your care once your skin becomes silky smooth. Continue on with your regular care (e.g. face lotion).

Start with care before your face lotion



Touch your cheeks after washing your face to check the texture and position.

We call this "pre-care" because you do it before your regular care. First, check your current skin without makeup.



Push twice as a basic rule. Push once more in places you are concerned about.

Prepare your skin to capture the moisture ahead of your face lotion. Spread without unevenness over your whole face.



Do this with an image of lifting your skin outward every 2 to 3 seconds.

You should feel as though you are lifting your skin outward from the center of your face. Rub in using the heat and pressure of your hand.

Face washing

Pre-care

Beauty lotion

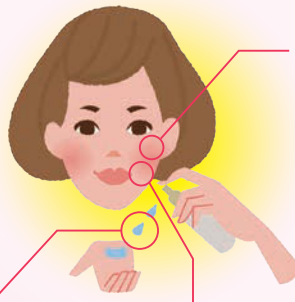
Lotion

Gel cream

This is a new concept of beauty theory you use before your regular skincare. This efficiently delivers the active ingredients which you want to permeate into your skin that most easily absorbs ingredients after washing your face to the inside of your skin. This is your own express delivery of beautiful skin. We have developed a raw collagen formula essence as a pre-care cosmetic.

Rewind Your Skin Time

Three Functions

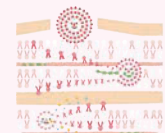


Zoom into your skin!

Rebirth of your skin with lamellar care!

Regenerate your skin from the base together with metabolism by permeating care into the neglected hollow lipid layer.

Your horny layer will be reborn!



Zoom in the essence!

Continued action with raw collagen!

This cream has about six times the water retention capacity of gelatin collagen and hydrolyzed collagen.

Zoom into the smile lines you are concerned about!

Immediate effect with Ceracut!

The newly developed "Ceracut" ingredient pulls the wrinkles on your skin (e.g. smile lines) to regenerate elasticity and give you lift!

Your skin will be improved immediately!

